

outPHit

**Deep retrofits made faster, cheaper and
more reliable**





outPHit wants to...

*...lower the barriers to the uptake of high quality deep retrofits by pairing **prefabrication** and **streamlined processes** with the rigour of the **EnerPHit Standard** for renovations according to Passive House principles.*

The challenge

Our buildings are inefficient

They contribute up to 40% of total emissions, amplifying climate change and energy poverty

Deep retrofits are needed

Their accessibility and delivery at the speed, cost and quality necessary are a challenge



The outPHit answer



How do we bring our buildings in line with international climate goals? How do we make them fit for the future?

#1 Make retrofits **simpler, faster and cheaper**



Streamlined approaches and prefabrication

#2 Lock in **high energy performance and quality**



The EnerPHit Standard for retrofits in line with Passive House principles

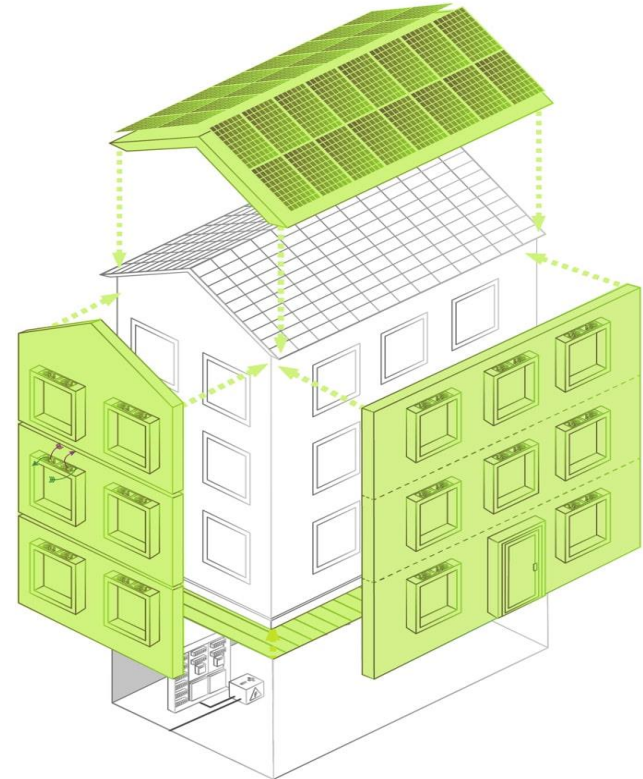
The outPHit answer – Part 1

Streamlining

- Optimal organisation of actors in the process via superior coordination
- Timely information for informed decision making

Prefabrication

- Brings actors, components and steps together for most decisions off-site and in advance
- Reduction of retrofit times and costs



The outPHit answer – Part 2

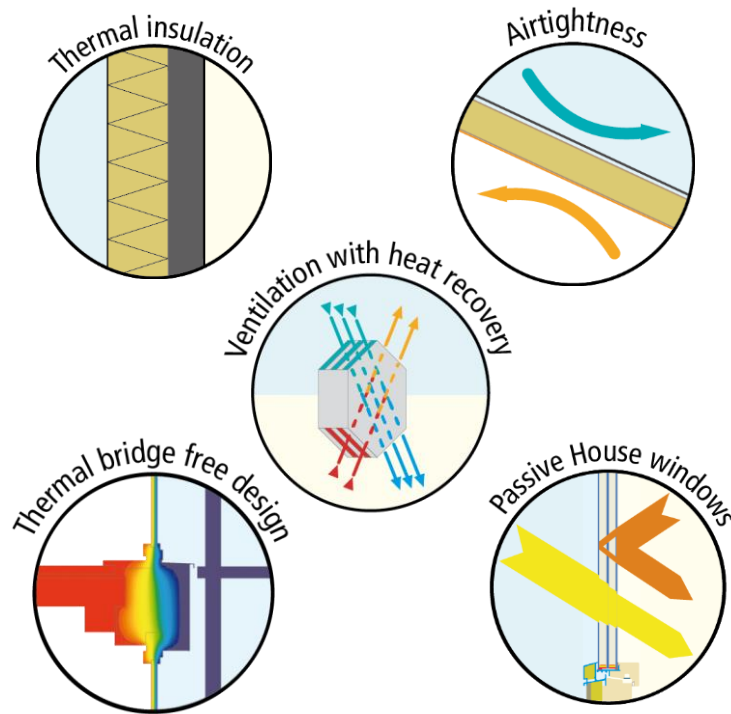
The EnerPHit Standard

- A sound basis in Passive House principles
- A focus on quality, comfort and outstanding performance



EnerPHit requirements
Passive House components and very low annual space heating demands*

*climate dependent; in Europe from 15 to 30 kWh/m²a



Our Work



outPHit is addressing barriers to high quality deep retrofits such as cost, complexity and time

**real life
case studies
across Europe**



**high performance renovation
systems and concepts
tools for decision making
quality assurance safeguards**



Our Work

- **INTEGRATING** streamlined and pre-fab processes with EnerPHit performance
- **SUPPORTING** component suppliers to improve products
- **CRAFTING** a certification scheme for whole house renovation systems as well as tools and guides to support decision making



Our Work

- **DRAFTING** simplified monitoring and approval concepts for the renovation design stage
- **ENCOURAGING** a one-stop-shop business model for deep renovation
- **BOOSTING** demand for streamlined, high performance approaches by involving stakeholders in the promotion of findings



What to expect

**Renovation
systems**

**Tender
documents**

**Performance
certification
scheme**

**Financial and
technical
monitoring**

**Technical
equipment
packages**

**Deep
renovation
guidelines**

**Contracting
concepts**

**Renovation
system
certification**

**Manufacturer
support**

**A municipal
practitioner
network**

**Design-stage
approval
concepts**

The Facts

- **PROJECT LEAD** Passive House Institute
- **PROJECT PARTNERS** 10 partners from 8 countries (AT, BE, FR, DE, GR, NL, ES, BG)
- **PROJECT DURATION** 36 months, until August 2023
- **OVERALL BUDGET** € 2.5 million
- **FUNDING AUTHORITY** European Union's Horizon 2020 programme



Project team



Climate Alliance



Want to learn more?

Get in touch at *insert your mail*
or visit **outphit.eu**